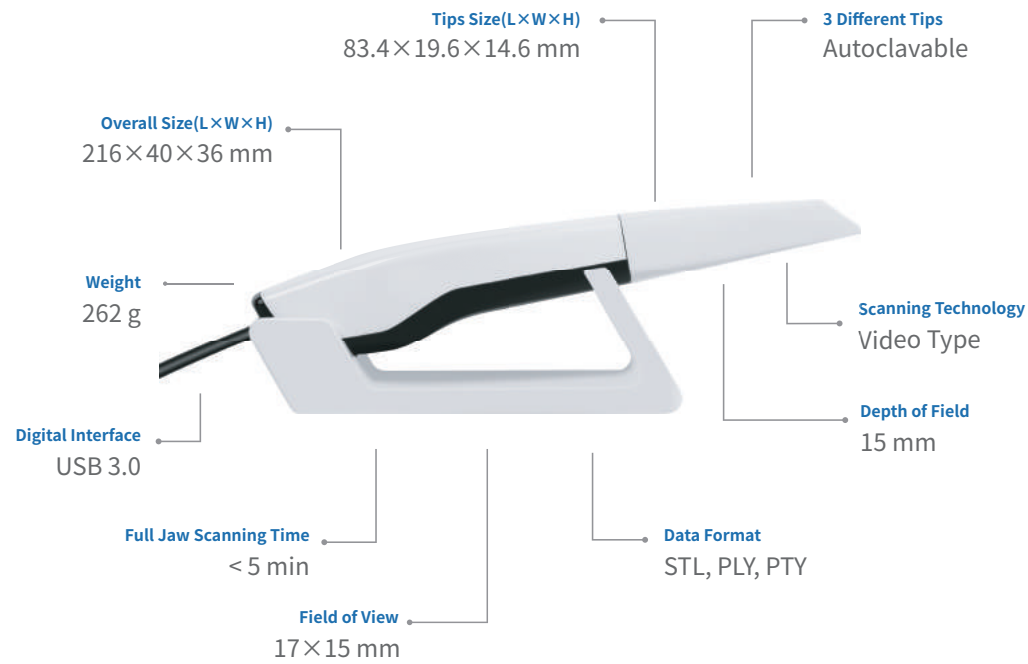


DIGITAL DENTISTRY START

With our PANDA 2
3D Intraoral Scanner



PANDA 2

PANDA 2	参数
Scanning Technology	Video Type
Overall Size(L×W×H)	216×40×36 mm
Weight	262 g
Tips	3 Different , Autoclavable
Tips Size(L×W×H)	83.4×19.6×14.6 mm
Field of View	17×15 mm
Depth of Field	15 mm
Data Format	STL, PLY, PTY
Digital Interface	USB 3.0
Full Jaw Scanning Time	<5 min

FREQTY TECH is Hi-Tech company in the field of digital dental impression system and we developed the 1st powder-free and true color 3D intraoral scanner in Asia(Panda P1 model), further more, on 2019, we launched the new generation of PANDA 2 model, which is much smaller than all the other powder-free intraoral scanners base on video-type 3D technology.

In cooperation with the Chinese Academy of Sciences, West China Hospital of Stomatology(Si Chuan University),University of Electronic Science and Technology of China, Zunyi Medical College and HarbinInstitute of Technology, Since the company found, we set our goal to be the world' s best maker of 3D intraoral scanner and professional provider of digital dental workflow solutions.

Precise your digital impression and grow more your business!



FREQTY TECHNOLOGY

Intraoral Scanner | Model Scanner | Milling Machine
Chengdu | Shanghai | Ningbo | Brazil
market@freqty.com | www.freqty.com



◎ Ningbo Freqty Optoelectronic Technology Co.,Ltd
Add : Rm502, building C, No.655 xueshi Road,Yinzhou District, Ningbo, Zhejiang,China
Tel : (+86) 181 6123 1898

◎ Freqty International Business Department
Add : Rm202, Building5, no.59 Shenan Road, MingHang District, Shanghai, China
Tel : (+86) 021 6498 9018
Email : wei@freqty.com

◎ Chengdu Freqty Medical Equipment,Co.,Ltd.
Add : Buidling D27-6F, UESTC Science Park, East Road of Industrial Park, Chengdu Sichuaan Province, China
Tel : (+86) 028 8531 2603
Email : market@freqty.com

* Products may not get all certificates and approval for different markets, please consult us for more details
* Specifications subject to change without notice.

Freqty Technology

频泰科技

AI Tech, Much Smarter!
Accurate, More Applications!
Small size, Much Easier!

2

PANDA

Freqty Technology

3D Intraoral scanner





OUR ADVANCED TECHNOLOGY

YOUR RIGHT-HAND ASSISTANTS

Specifications



Efficient Treatment Experience

Reproduce the real state of teeth
 Accurate anatomical features
 3D HD color, visualize communications
 Easy and excited treatment experience



Accurate Shoulder Margin

Clear and easy to identify margin lines
 Simplify CAD design
 Real-time and accurate display
 Improve the success rate of a visit



Convenient Preparation Check

Shade detect, for better preparation
 Clear occlusion registration check
 Convenient tools for clinics and labs
 Adjust and correct production in time



Revolutionary Improvement

Scanning speed improve 50%
 Handpiece weight decrease 50%
 Data accuracy improve 30%
 Height of tips decrease 14%

Applications

Restoration

Accurate and clear shoulder margin brings the efficient design, HD color images help the dentists to distinguish the gingival and teeth effectively.
 One visit, Immediate restoration!



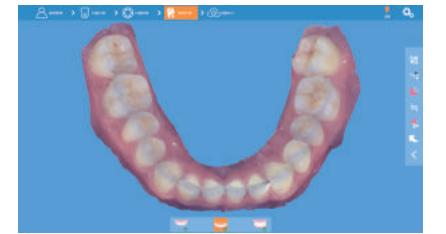
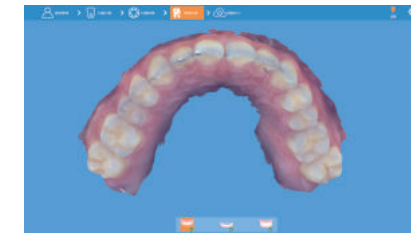
Implant

Fast scan with big field of view, easy to capture 3mm data of cuff, and accurate scan of metal path pin, no need to do repeat impression and improve patient's treatment experience.



Orthodontics

High accuracy of the full dentition, restore the real state of full arch
 Fast get of orthodontic treatment, save time for more patients



Features of Products



Ai Technology, much smarter to learn what you need Improve a lot of scanning experience



Margin line clear, full HD color, High Accuracy



3 Different tips Meet more demands of different applications



Fast scanning speed, easy to learn and use



Much smaller, very easy to operate



Powder-free and true color scan

Worry about complication of traditional impression?
 Worry about the failure of impression?
 Worry about the patient's experience?
 PANDA 2 Bring you a new world!

